



▶ MEDICAID PAYS FOR MORE THAN HALF THE BIRTHS IN THE STATE OF TEXAS
(TEXAS HEALTH AND HUMAN SERVICES COMMISSION 2010)



▶ MEDICAID AND CHIP PROVIDE INSURANCE TO 3.8 MILLION TEXANS EACH MONTH
(TEXAS HEALTH AND HUMAN SERVICES COMMISSION 2010)



▶ MEDICAID ASSISTS 2/3 OF TEXANS IN NURSING HOMES
(TEXAS HEALTH AND HUMAN SERVICES COMMISSION 2010)

Cover Texas Now!

Healthcare Advocacy Day

March 30, 2011

WHAT DO TEXANS WANT?

WHEN REGISTERED VOTERS OF TEXAS WERE ASKED WHETHER THEY WANT TO CUT SPENDING FOR HEALTH CARE FOR CHILDREN AND LOW TO MODERATE FAMILIES. THE MAJORITY DECLARED "NO!"

SHOULD THE LEGISLATURE:

CUT SPENDING A LOT	8%
CUT SPENDING A LITTLE	17%
NOT CUT SPENDING AT ALL FOR HEALTH CARE FOR CHILDREN AND LOW TO MODERATE INCOME FAMILIES	61%
NOT SURE	4%
REFUSED TO ANSWER	

Source: Blum & Associates, Austin American Statesman Poll 2/21/11

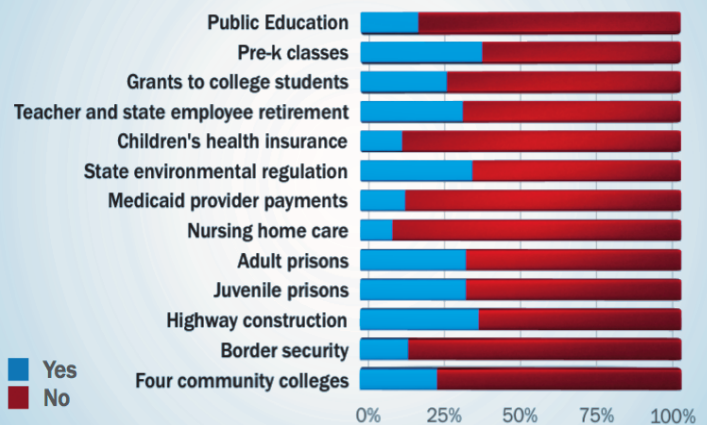
CHILDREN'S HEALTH INSURANCE

WHEN POLLED, 87% OF TEXANS **Would Not** END FUNDING FOR CHILDREN'S HEALTH INSURANCE

(UT/TEXAS TRIBUNE POLL 2011)



WOULD YOU SUPPORT THE FOLLOWING CUTS?



Source: UT/Texas Tribune Poll 2/21/11

WHERE DOES TEXAS RANK?

HOW TEXAS RANKS AMONG THE 50 STATES (2011)

- PERCENT OF UNINSURED CHILDREN (1ST)
- PERCENT OF POPULATION WITH FOOD INSECURITY (2ND)
- PERCENT OF CHILDREN LIVING POVERTY (4TH)
- PERCENT OF POPULATION LIVING BELOW POVERTY (4TH)
- PERCENT OF POPULATION UNINSURED (1ST)
- PER CAPITA SPENDING ON MENTAL HEALTH (50TH)
- PER CAPITA SPENDING ON MEDICAID (49TH)
- PERCENT OF PEOPLE COVERED BY MEDICAID (49TH)

Source: Texas Legislative Study Group (2011). "Texas on the Brink: A Report on the State of the State"

2003 MEDICAID CUTS

IN 2003, TEXAS MADE SEVERE CUTS TO THE MEDICAID PROGRAM WHICH RESULTED IN DEVASTATING RESULTS FOR TEXAS CHILDREN AND THEIR FAMILIES:

- ▶ THERE WAS A DROP OF 36% OF CHILDREN ON CHIP (CENTER FOR PUBLIC POLICY PRIORITIES)
- ▶ PERCENTAGE OF DOCTORS TAKING NEW MEDICAID PATIENTS DROPPED BY 30% (POLL, TEXAS MEDICAL ASSOC.)
- ▶ 90 DAY WAITING PERIODS FOR CHIP RESULTED IN HIGHER PER CAPITA COSTS DUE TO DELAYED ACCESS TO CARE (KAISER FAMILY FOUNDATION)